

▶ "Build Mode"

There are two building modes:

- \* "One to One" mode -- one image file will be converted into one PDF file.
- \* "All to One" mode -- all images files you selected will be converted into one PDF file.

▶ "Destination PDF File Name"

- \* "Destination PDF file name is same as source image file name"
- \* "Set destination PDF file name"

Notice: if current building mode is "One to One", the file name you entered will be the prefix of destination PDF file name.

▶ "Destination PDF File Path"

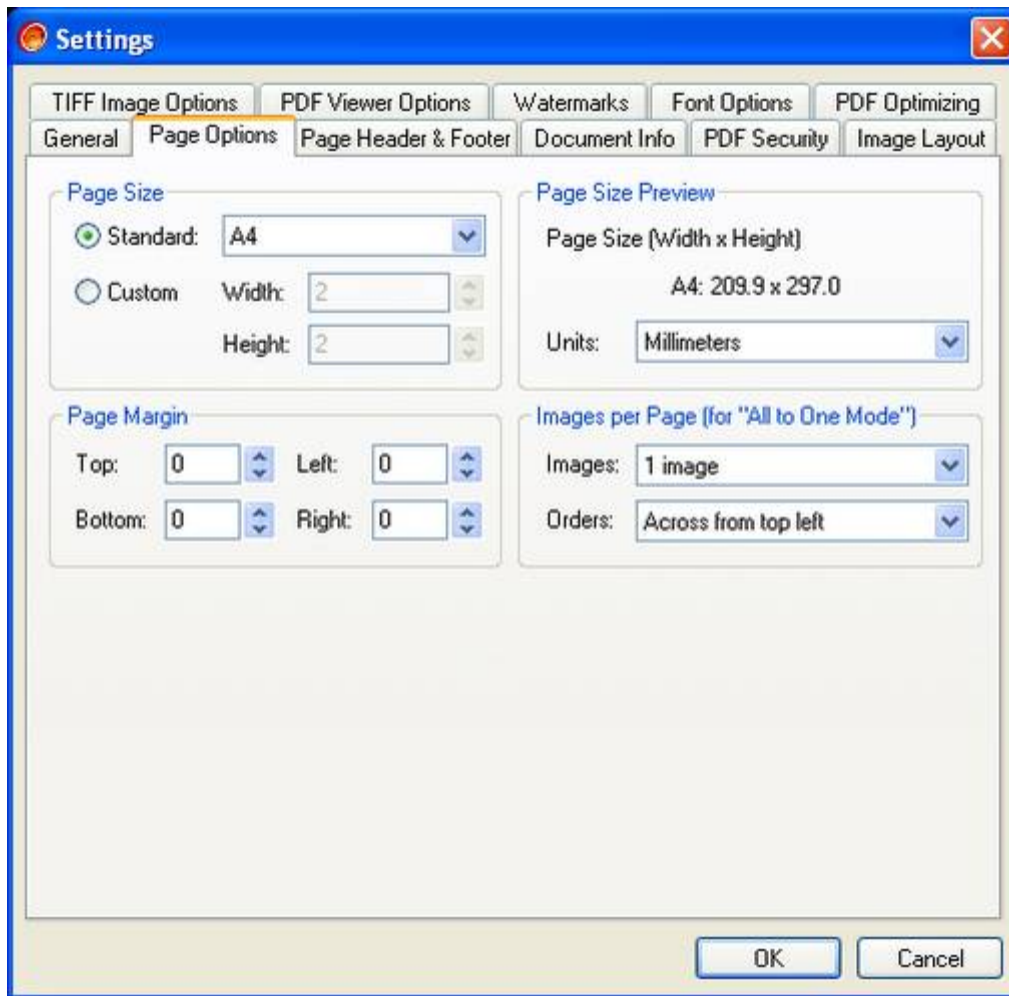
Set destination PDF file path.

▶ "When Destination PDF File Exist"

- \* "Auto rename the PDF file"
- \* "Overwrite the PDF file"
- \* "Skip building the PDF file"
- \* "Enter a new PDF file name"

▶ "Miscellaneous"

- \* "Hide main window when minimized" -- hide main window to the system tray area.
- \* "Always skip building unsupported files" -- skip building unsupported image files automatically.
- \* "Open PDF file automatically after building"
- \* "Turn off computer when building finished"



▶ "Page Size"

Set standard PDF page size, such as: A0, A1, A2, A3, A4, Folio, Envelope, etc; you can also define your own page size.

If you set PDF page size to "Auto Size", the destination PDF page size will be adjusted to the source image size automatically.

Notice: For custom PDF page size, the width or height of the page you defined must between 2mm and 5080mm (mm: millimetres).

▶ "Page Size Preview"

Here you can view PDF page size in different unit.

Notice: If you set standard PDF page size to "Auto Size", "Page Size Preview" will be disabled.

▶ "Page Margin"

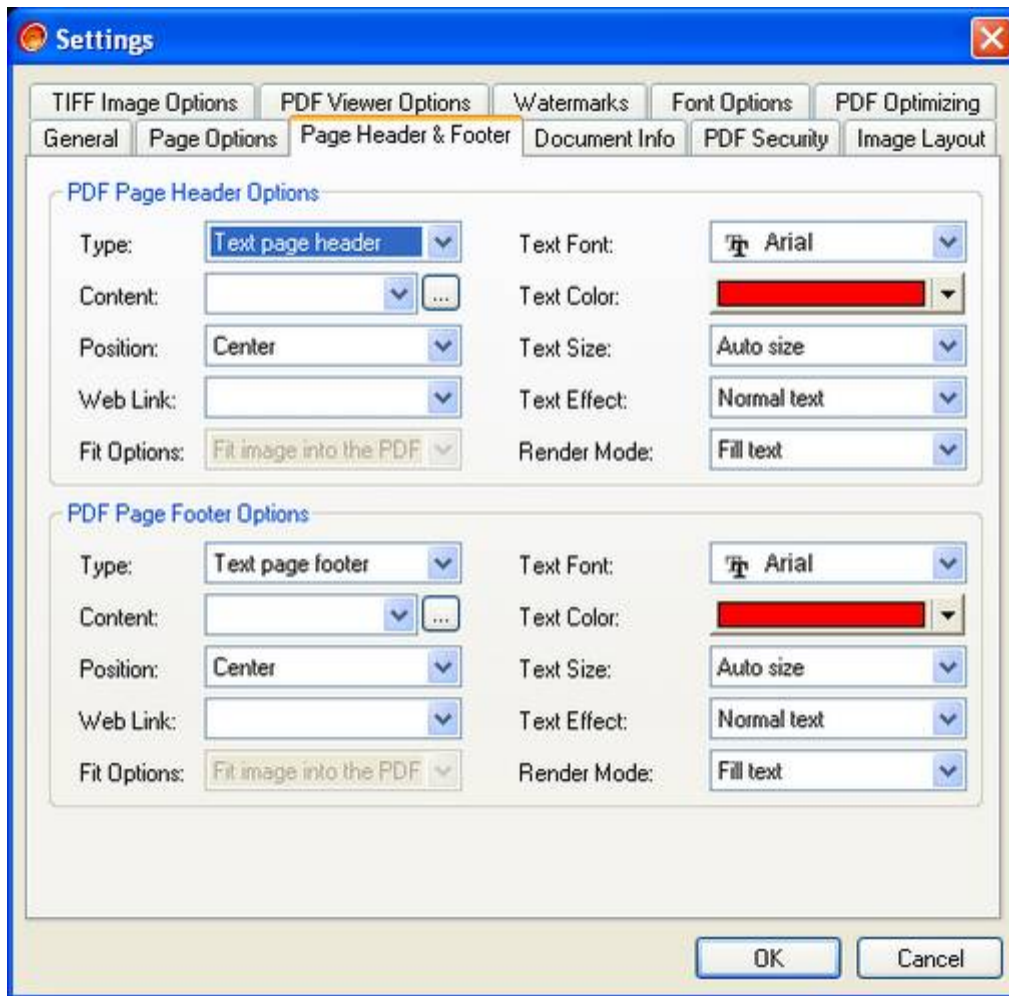
Set PDF page margin for standard PDF page or custom defined page.

Notice: If you set standard PDF page size to "Auto Size", "Page Margin" will be disabled.

▶ "Images per Page" (Only available for "All to One" mode)

When building image files to PDF document ("All to One" mode), you can place multiple image files on one PDF page.

Notice: If you set standard PDF page size to "Auto Size", "Images per Page" will be disabled.



► "PDF Page Header Options"

Add page header to PDF pages. You can add text or image page header to PDF pages, set its position, destination URL link, content, text font, text color, text size, text render mode and text effects.

► "PDF Page Footer Options"

Add page footer to PDF pages. You can add text or image page header to PDF pages, set its position, destination URL link, content, text font, text color, text size, text render mode and text effects.

\* For image page header/footer, you can set its fit options:

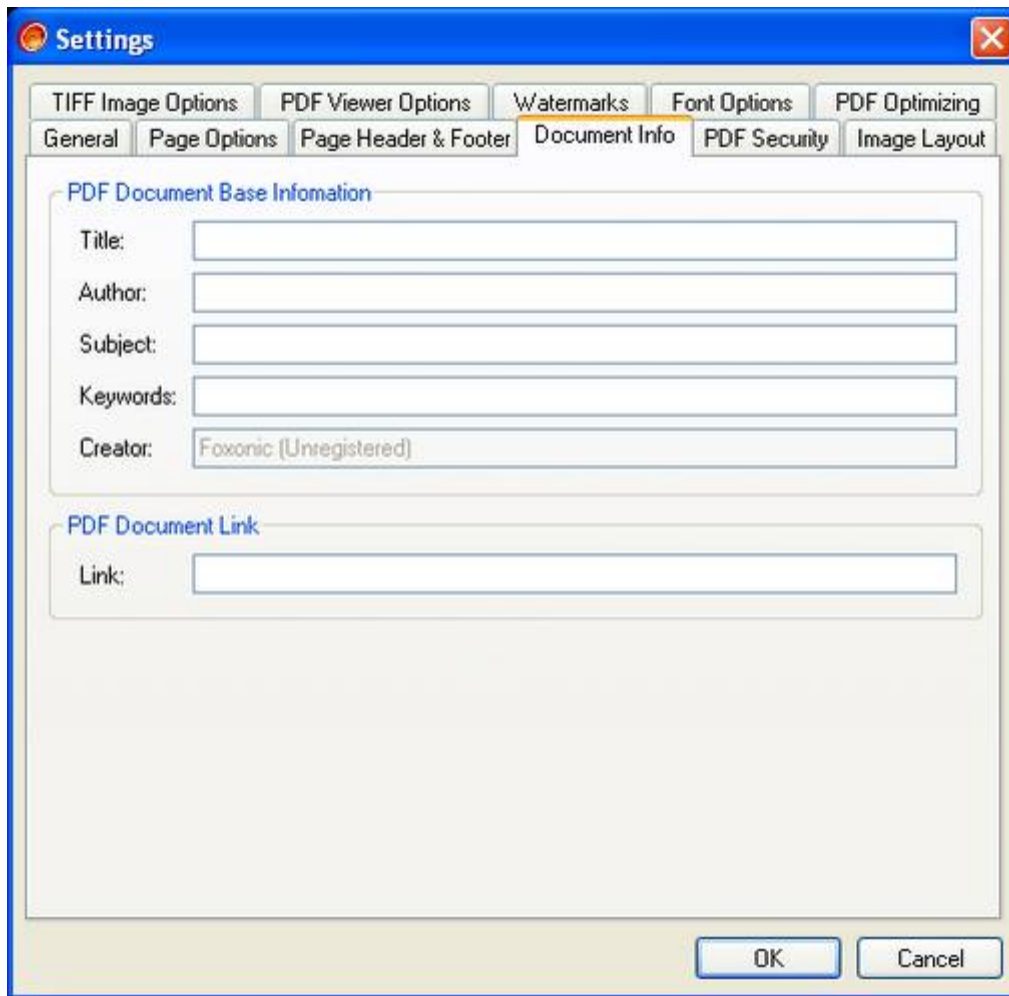
(1) "Fit image into the PDF page header/footer while preserving aspect ratio ": the image will entirely fit into the PDF page header/footer area while preserving its aspect ratio.

(2) "Stretch the image to the PDF page header/footer in both direction": the image will entirely cover the PDF page header/footer area, generally this method will distort the image.

(3) "Stretch the image to the PDF page header/footer in one direction": the image will entirely cover the PDF page header/footer area while preserving its aspect ratio, generally part of the image will exceed the PDF page header/footer area.

(4) "Only position the image without scaling and clipping": Just position the image, without any scaling and clipping.

(5) "Place image and clipping it if the image exceeds the PDF page header/footer": Place the image without any scaling, but clipping it at the edge of the PDF page header/footer when the image exceeds the PDF page header/footer area.

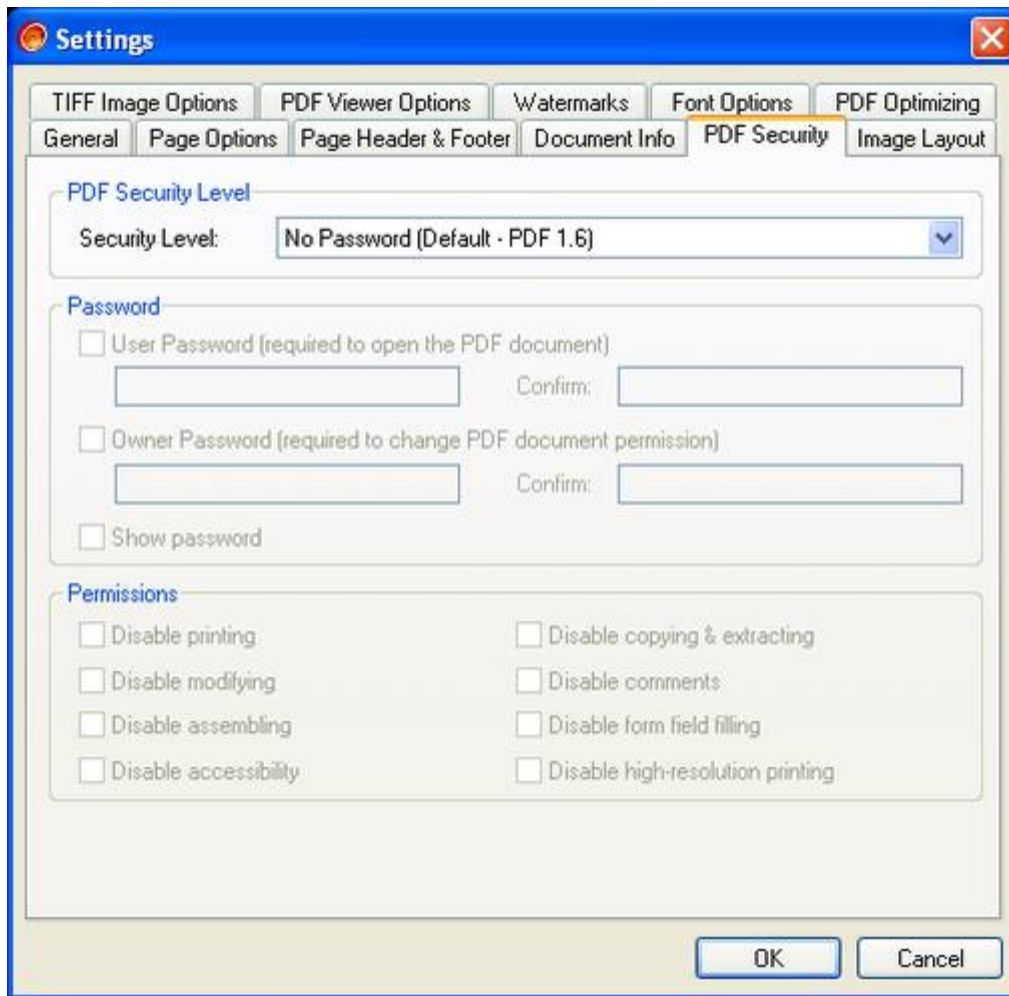


▶ "PDF Document Base Information"

Set information of PDF file, you can set author, subject, title and keywords. You can't set "Creator" property, this property will always be "Foxonic".

▶ "PDF Document Link"

Set PDF document base web link. When the PDF document you build has web links to other resources, but for some reasons, these resources is moved to a different location or is not valid again, then you can set base web link to make sure that relative links will still work. If your PDF document doesn't have any web links, just leave this field blank.



► "PDF Security Level"

Set PDF security level and PDF version.

Different PDF encryption standard will be used based on the PDF version you have selected:

- \* "No Password (Default - PDF 1.6)": No PDF password will be set, and the default PDF version will be set to "PDF 1.6".
- \* "40-bit RC4 Encryption for Acobat 3.x, 4.x (PDF 1.3)": 40-bit RC4 PDF encryption will be used, and PDF version is "1.3". You can enable or disable "Disable printing", "Disable copying & extracting", "Disable modifying" and "Disable comments" PDF document permission settings.
- \* "128-bit RC4 Encryption for Acobat 5.x (PDF 1.4)": 128-bit RC4 PDF encryption for Acobat 5.x will be used, and PDF version is "1.4". You can enable or disable all PDF document permission settings.
- \* "128-bit RC4 Encryption for Acobat 6.x (PDF 1.5)": 128-bit RC4 PDF encryption for Acobat 6.x will be used, and PDF version is "1.5". You can enable or disable all PDF document permission settings.
- \* "128-bit AES Encryption for Acobat 7.x & above (PDF 1.6)": 128-bit AES PDF encryption for Acobat 7.x will be used, and PDF version is "1.6". You can enable or disable all PDF document permission settings. To open the destination PDF document encrypted with 128-bit AES PDF Encryption, Adobe Acobat (Reader) 7.x & above is needed.

► "Passwords"

Set "User Password" and "Owner Password":

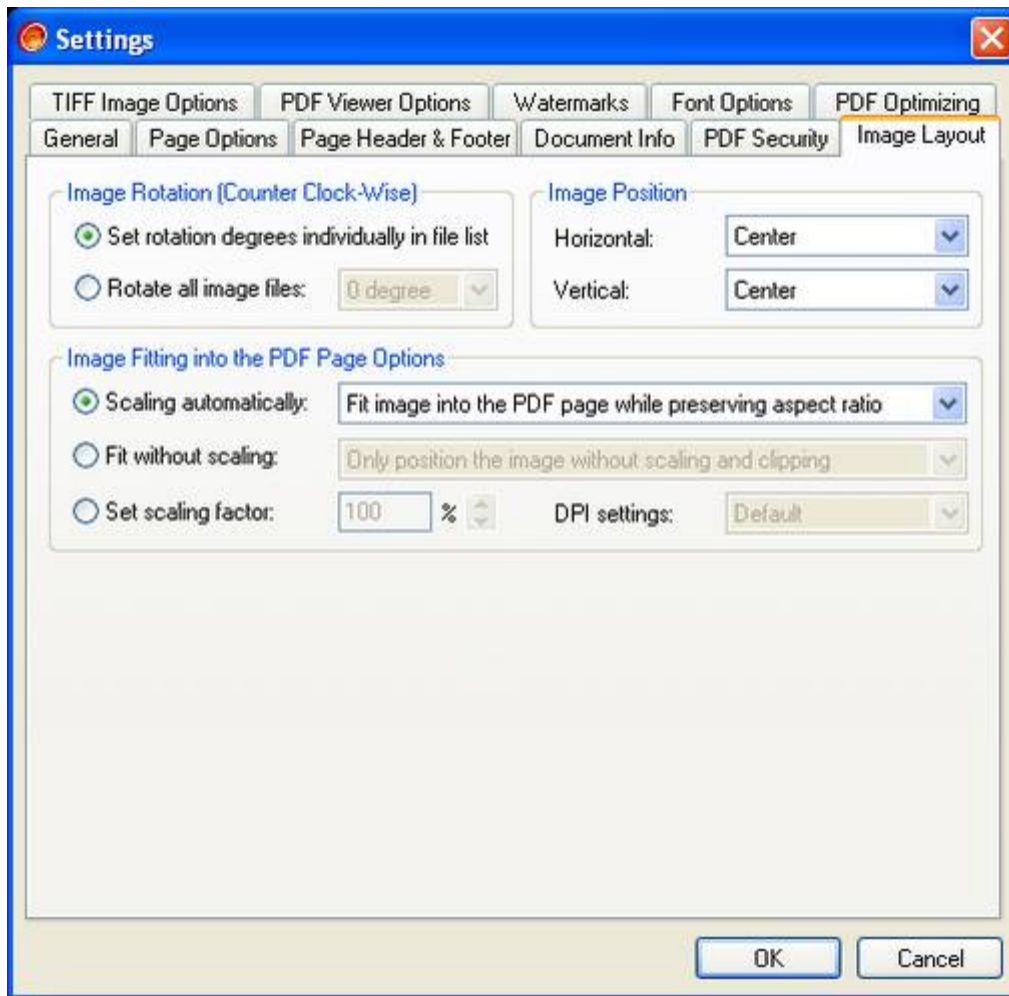
- \* "User Password": When open PDF document, user password is required.
- \* "Owner Password": When change permissions of PDF document, owner password is required.

Notice: If you enabled "User Password", "Owner Password" must be enabled too. If "Owner Password" is not enabled, anybody can change the "User Password" and PDF document permissions you have set. That is to say, the PDF document that protected only by "User Password" can be modified by anyone. So, for the sake of PDF document security, "Owner Password" should be enabled to protect the destination PDF document.

## ▶ "Permissions"

Set permissions of PDF document. Permission settings will be disabled if "User Password" and "Owner Password" does not enabled.

- \* "Disable printing": prevent file printing.
  - \* "Disable copying & extracting": prevent copying and extracting graphics, and disable the accessibility interface.
  - \* "Disable modifying": prevent users from adding form fields or making any other changes.
  - \* "Disable comments": prevent adding or changing comments or form fields.
  - \* "Disable form field filling": prevent form field filling, even if "No comments" hasn't been specified.
  - \* "Disable assembling": prevent inserting, deleting, or rotating pages and creating bookmarks and thumbnails, even if "No modify" hasn't been specified.
  - \* "Disable high-resolution printing": prevent high-resolution printing. If "No print" hasn't been specified, printing is restricted to the "print as image" feature which prints a low-resolution rendition of the page.
  - \* "Disable accessibility": prevent extracting graphics for accessibility purposes (such as screen-reader program)
-



► "Image Rotation (Counter Clock-Wise)"

Set rotation for all images or set rotation for each image individually.

\* Set rotation degrees individually in file list

If you select "Set rotation degrees individually in file list", you can set rotation degrees of each image in file list window with a popup menu when you right click mouse button.

\* Rotate all image files:

\* "0 degree": No rotation.

\* "90 degrees": Image will be rotated by 90 degrees counter clockwise.

\* "180 degrees": Image will be rotated by 180 degrees counter clockwise.

\* "270 degrees": Image will be rotated by 270 degrees counter clockwise.

► "Image Position"

Set image position when place image on the PDF page.

\* "Horizontal": In horizontal position, you can place image on the "Left", "Center" or "Right" of the PDF page.

\* "Vertical": In vertical position, you can place image on the "Top", "Center" or "Bottom" of the PDF page.

► "Image Fit into the PDF Page Options"

Set image fit method when place image on the PDF page.

\* "Scaling automatically":

(1) "Fit image into the PDF page while preserving aspect ratio ": image will entirely fit into the PDF page while preserving its aspect ratio.

(2) "Stretch the image to the PDF page in both direction": image will entirely cover the PDF page, generally this method will distort the image.

(3) "Stretch the image to the PDF page in one direction": image will entirely cover the PDF page while preserving its aspect ratio, generally part of the image will exceed the PDF page.

\* "Fit without scaling":

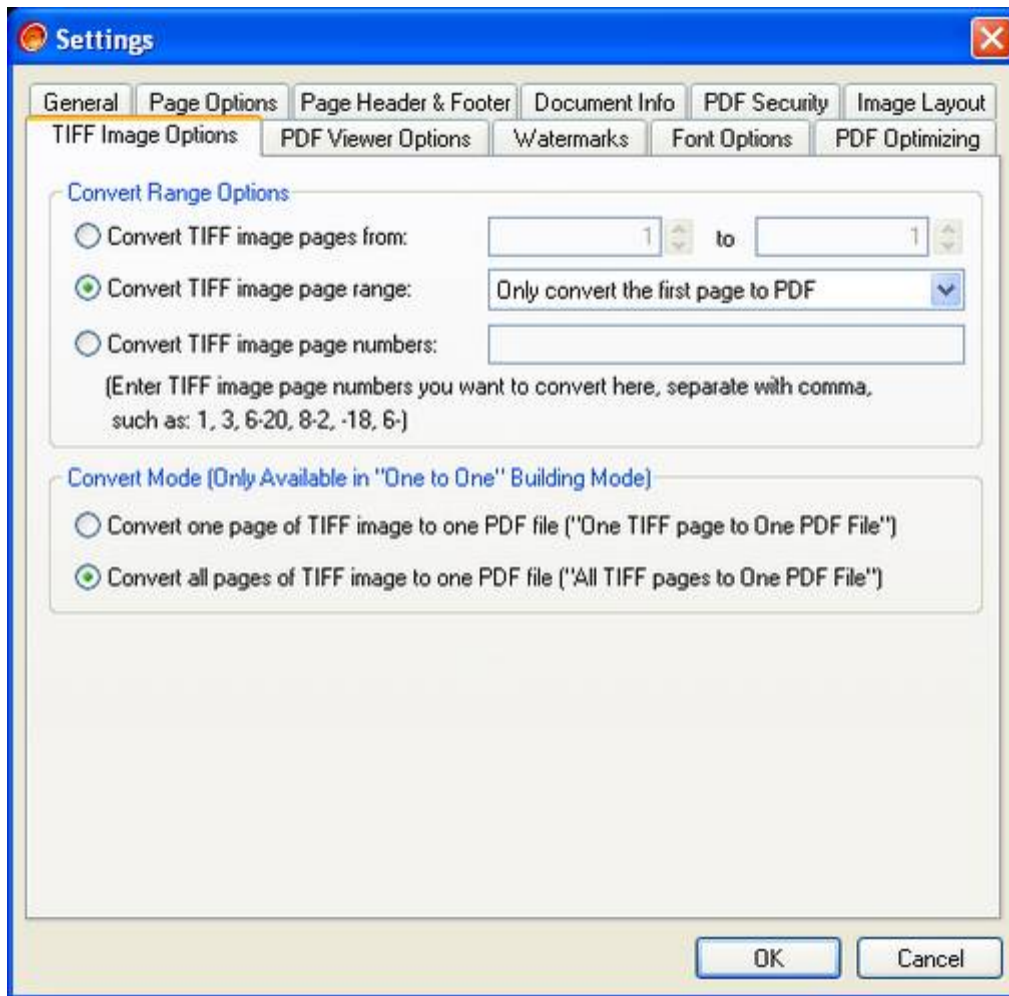
(1) "Only position the image without scaling and clipping": Just position the image, without any scaling and clipping.

(2) "Place image and clipping it if the image exceeds the PDF page": Place the image without any scaling, but clipping it at the edge of the PDF page when the image exceeds the PDF page.

\* "Set scaling factor": set scaling factor of image when place it on PDF page.

\* "DPI settings": set the desired image resolution in pixels per inch in horizontal and vertical direction.



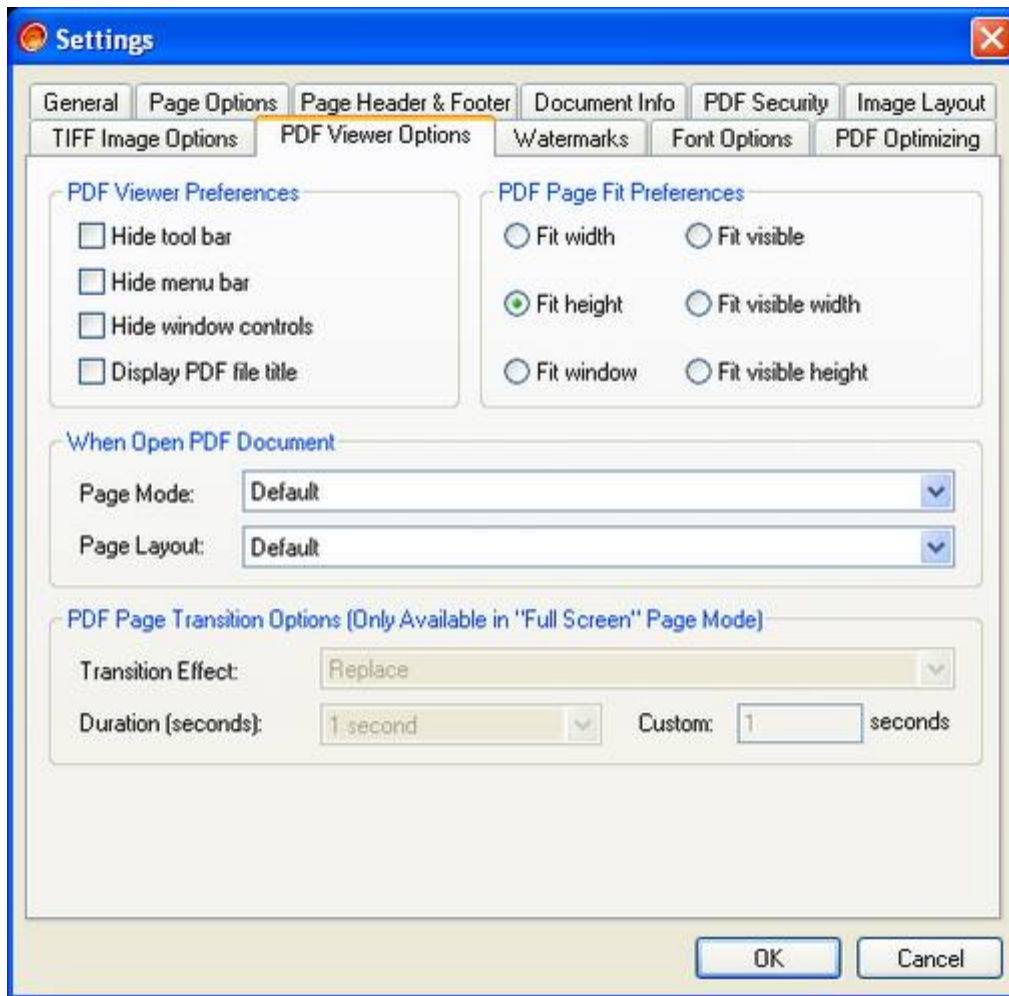


► "Convert Range Options"

- \* "Convert TIFF image pages from": set start page and end page, all TIFF pages between start page and end page will be converted to PDF document.
- \* "Convert TIFF image page range": convert the specified TIFF pages to PDF document, such as: the first page, the last page or all the even pages.
- \* "Convert TIFF image page number": enter the TIFF page number you want to convert, and all these pages will be converted to PDF document.

► "Convert Mode (Only Available in "One to One" Building Mode)"

- \* "One TIFF page to One PDF File": convert one TIFF page of a multi-page TIFF image to one PDF file.
- \* "All TIFF pages to One PDF File": convert all TIFF pages of a multi-page tiff image to one PDF file.



► "PDF Viewer Preferences" & "PDF Page Fit Preferences"

Set PDF viewer (Adobe Acrobat Reader) preferences and PDF Page Fit Preferences.

- \* "Hide tool bar": if set this option checked, Acrobat's tool bar will be hide.
- \* "Hide menu bar": if set this option checked, Acrobat's menu bar will be hide.
- \* "Hide window controls": if set this option checked, Acrobat's window controls will be hide.
- \* "Display PDF title": if set this option checked, the 'Title' field of PDF document will be displayed in Acrobat's title bar.

\* "Fit width": fit the page width to the window.

\* "Fit height": fit the page height to the window.

\* "Fit window": fit the whole page to the window.

\* "Fit visible": fit the visible contents of the page to the window.

\* "Fit visible width": fit the visible contents of the page to the window with top edge of visible contents at the top edge of the window.

\* "Fit visible height": fit the visible contents of the page to the window with left edge of visible contents at the left edge of the window.

► "When Open PDF Document"

Set PDF document page mode page layout when it is opened.

\* Page Mode:

\* "Default": when PDF document opened, neither bookmarks nor thumbnails are visible.

\* "Show bookmarks (if contains)": when PDF document opened, show bookmarks if the PDF document contains.

\* "Show thumbnails": when PDF document opened, show thumbnails.

\* "Full screen": Open PDF document in full screen mode.

\* Page Layout (Not available in "Full screen" Page Mode):

\* "Default": using the default page layout setting of PDF viewer.

\* "Single page": display one page at a time.

\* "One column": display the pages continuously in one column.

\* "Two columns (left)": display the pages in two columns, odd pages on the left.

\* "Two columns (right)": display the pages in two columns, odd pages on the right.

\* "Two pages (left)": display the pages two at a time, with odd-numbered pages on the left.

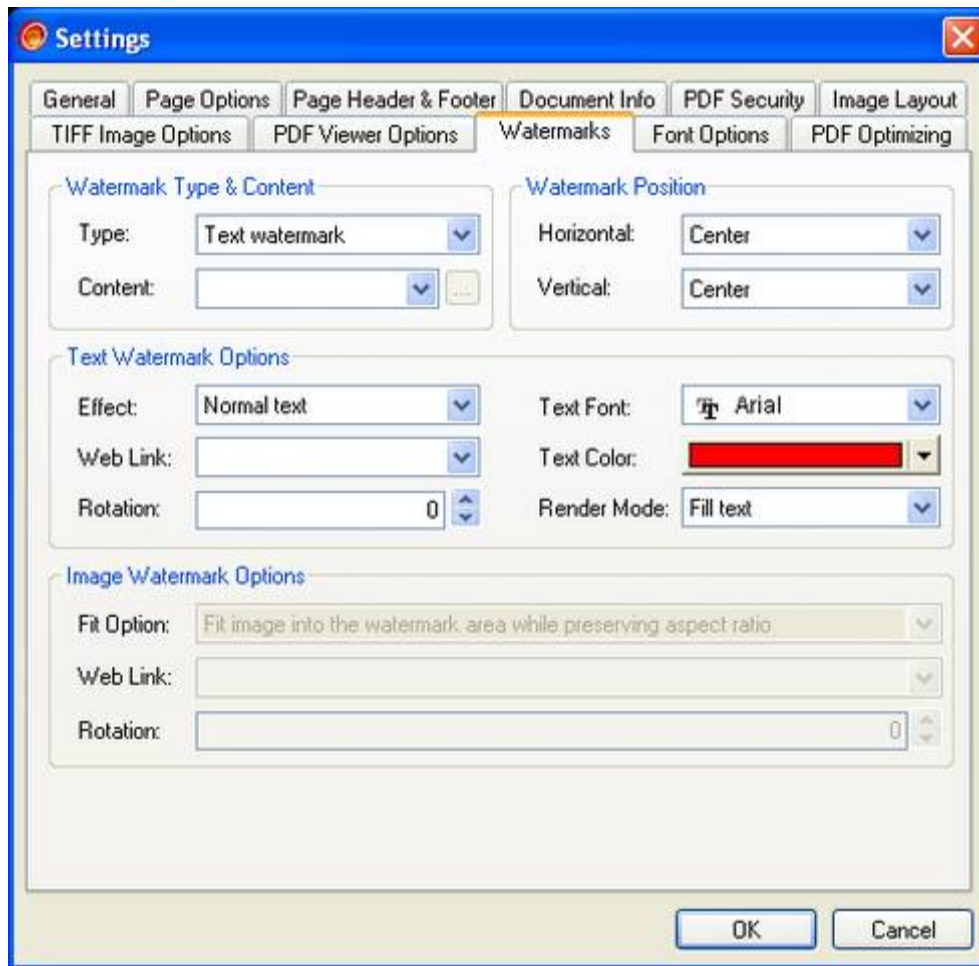
\* "Two pages (right)": display the pages two at a time, with odd-numbered pages on the right.

▶ "PDF Page Transition Options (Only available in "Full Screen" Page Mode)"

When "Full screen" page mode is enabled, set PDF page transition effect and duration.

\* "Transition Effect ": Set PDF page transition effect.

\* "Duration (seconds)": Set PDF page display duration in seconds. If you set this option to "Custom", the maximum PDF page display duration you can set is 500 seconds.

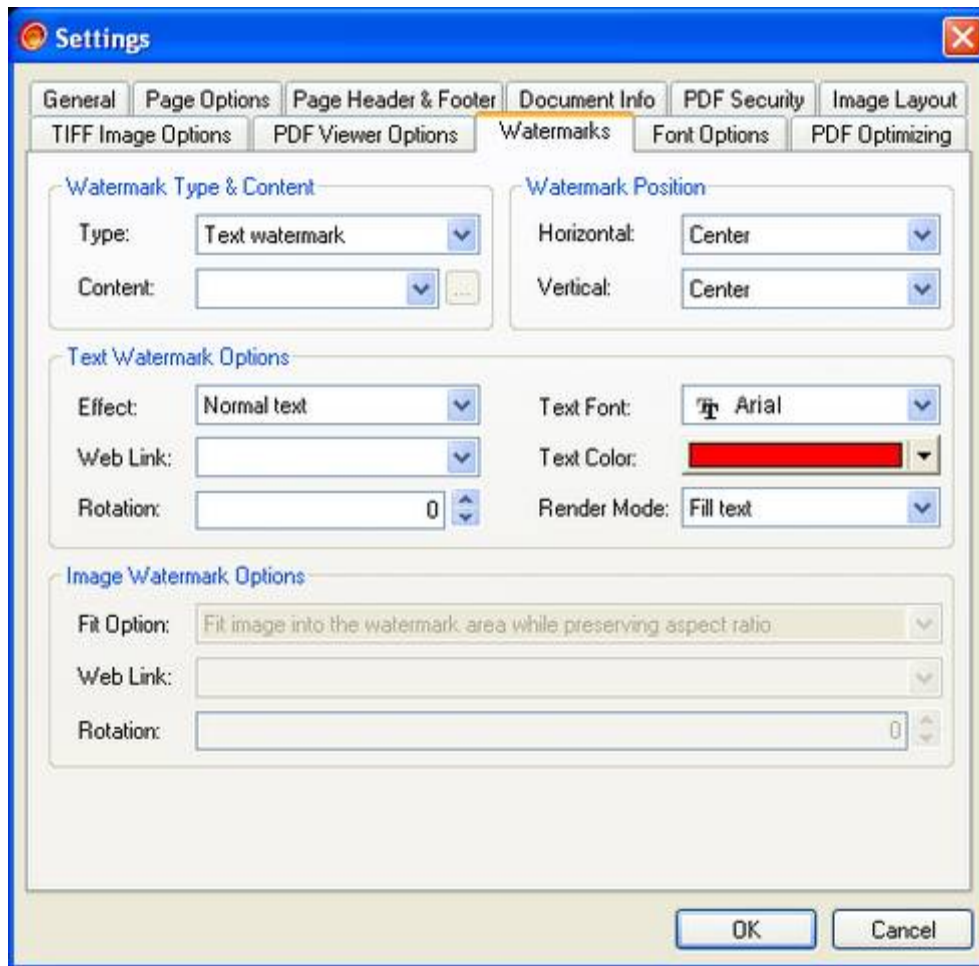


You can add text or image watermark to PDF pages.

- ▶ "Watermark Type & Content"  
Set type of watermark, and set content of text/image watermark.
- ▶ "Watermark Position"  
Set position of text/image watermark.
- ▶ "Text Watermark Options"  
Set text font/color/render mode, URL link and rotation degrees (counter-clockwise: 0 - 360 degrees) of text watermark.
- ▶ "Image Watermark Options"  
Set fit options, URL link and rotation degrees (counter-clockwise: 0 - 360 degrees) of image watermark.

Fit options for fitting image watermark to the PDF pages:

- (1) "Fit image into the watermark area while preserving aspect ratio ": the image will entirely fit into the watermark area while preserving its aspect ratio.
- (2) "Stretch the image to the watermark area in both direction": the image will entirely cover the watermark area, generally this method will distort the image.
- (3) "Stretch the image to the watermark area in one direction": the image will entirely cover the watermark area while preserving its aspect ratio, generally part of the image will exceed the watermark area.
- (4) "Only position the image without scaling and clipping": just position the image, without any scaling and clipping.
- (5) "Place image and clipping it if the image exceeds the watermark area": place the image without any scaling, but clipping it at the edge of the watermark area when the image exceeds the PDF page watermark area.

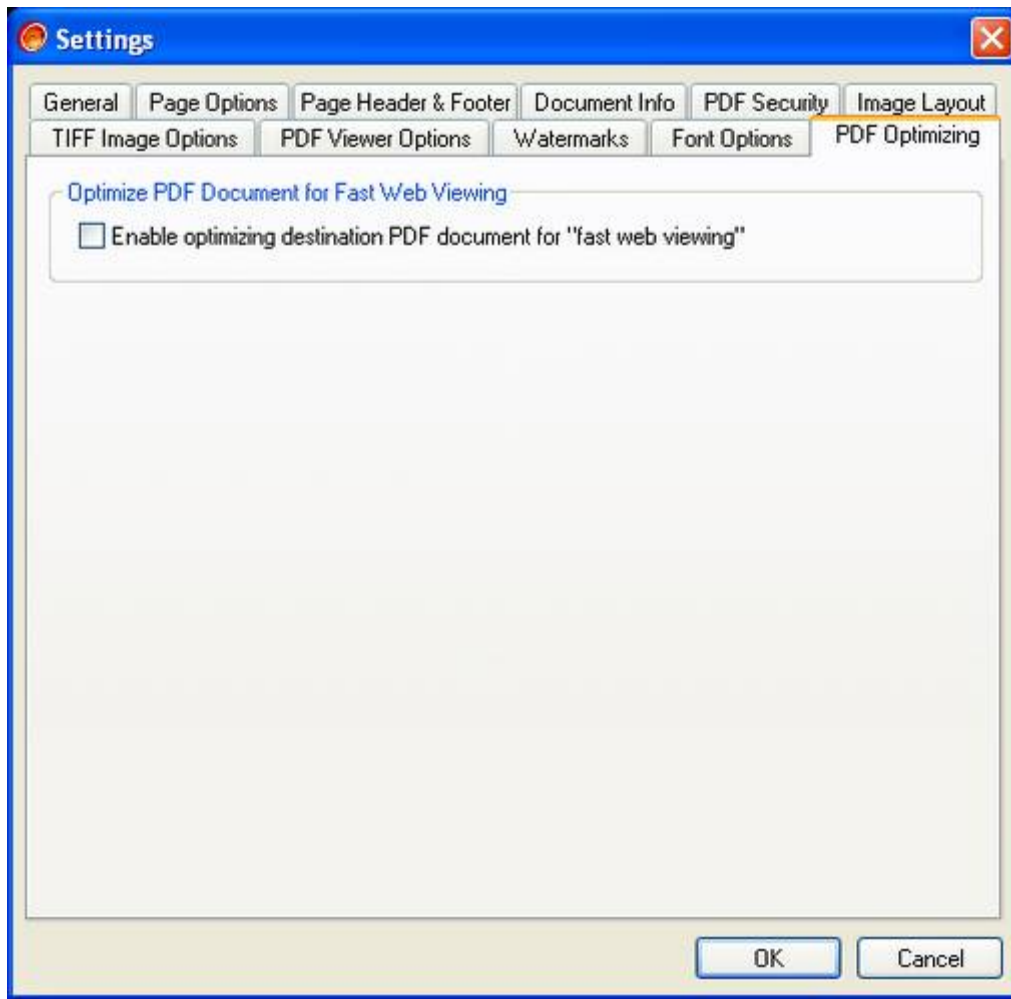


You can add text or image watermark to PDF pages.

- ▶ "Watermark Type & Content"  
Set type of watermark, and set content of text/image watermark.
- ▶ "Watermark Position"  
Set position of text/image watermark.
- ▶ "Text Watermark Options"  
Set text font/color/render mode, URL link and rotation degrees (counter-clockwise: 0 - 360 degrees) of text watermark.
- ▶ "Image Watermark Options"  
Set fit options, URL link and rotation degrees (counter-clockwise: 0 - 360 degrees) of image watermark.

Fit options for fitting image watermark to the PDF pages:

- (1) "Fit image into the watermark area while preserving aspect ratio ": the image will entirely fit into the watermark area while preserving its aspect ratio.
- (2) "Stretch the image to the watermark area in both direction": the image will entirely cover the watermark area, generally this method will distort the image.
- (3) "Stretch the image to the watermark area in one direction": the image will entirely cover the watermark area while preserving its aspect ratio, generally part of the image will exceed the watermark area.
- (4) "Only position the image without scaling and clipping": just position the image, without any scaling and clipping.
- (5) "Place image and clipping it if the image exceeds the watermark area": place the image without any scaling, but clipping it at the edge of the watermark area when the image exceeds the PDF page watermark area.



► "Optimize PDF Document for Fast Web Viewing"

Enable/Disable optimizing destination PDF file for fast web viewing.

This feature is especially useful for transferring a large PDF file over the web, normally, when transfer a PDF file over the web, the PDF file must be fully transferred to the client, if the PDF file is larger, it will take a long time for transferring the PDF file, for the PDF document has been optimized for fast web viewing, a web server can transfer the optimized PDF document one page at a time, that means, the first page of the document will be presented to the user without having to wait for the full document to download from the web server. This will greatly enhanced the end user's experience.

Notice: enable this option will cause the converting speed a little slower.